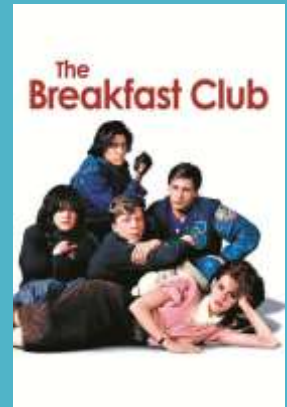
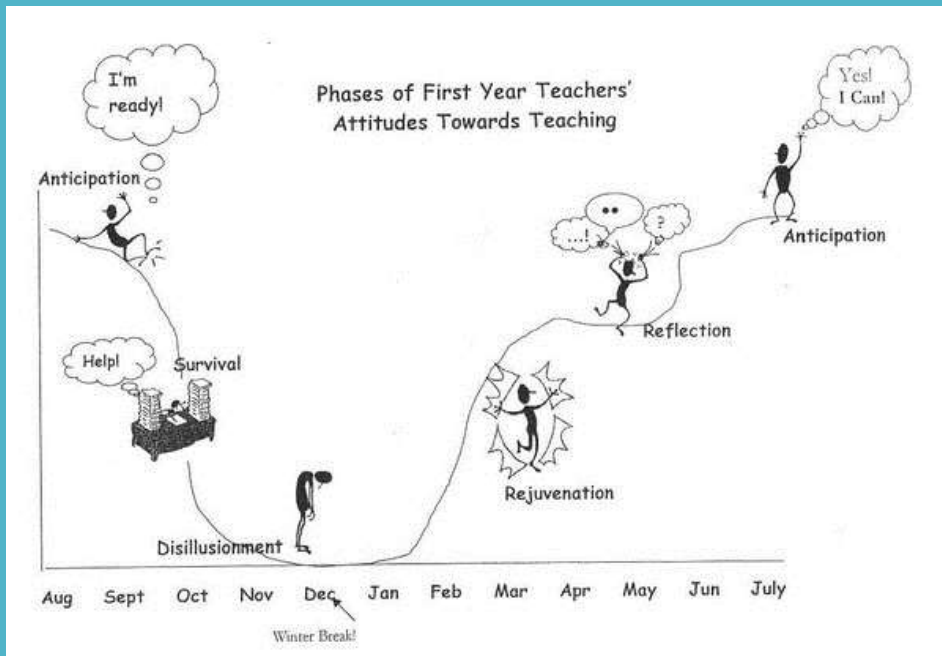


“Evidence knows no boundary; collaboration for children across state lines”

2015 NAC
Stacey Martin, MA, BCBA, LBA
Lee’s Summit, MO

1985





1985

- 8 Elementary Schools
- 1 Middle School
- 1 High School

3 students known to be on the autism spectrum or had Ed. Autism as their area of elig



2005

- 15 Elementary Schools
- 3 Middle School
- 3 High School

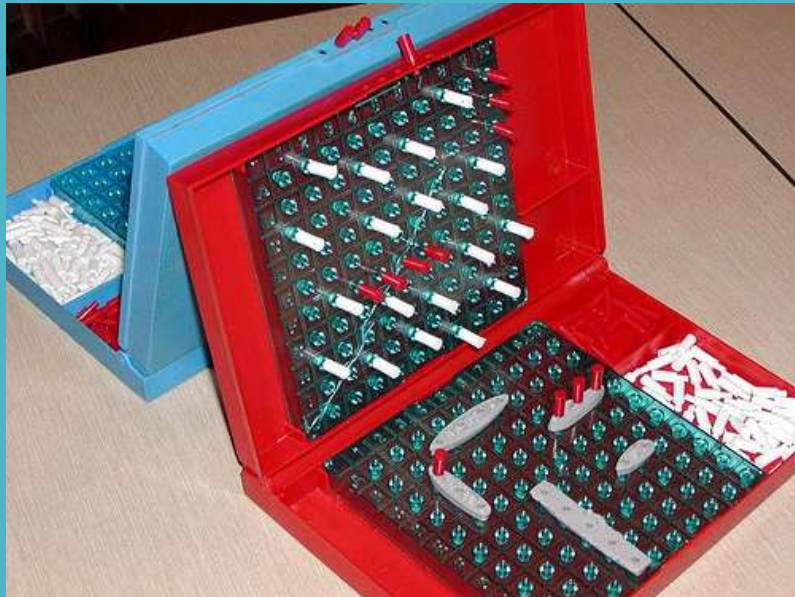
300+ students known to be on the autism spectrum or had Ed. Autism as their area of elig



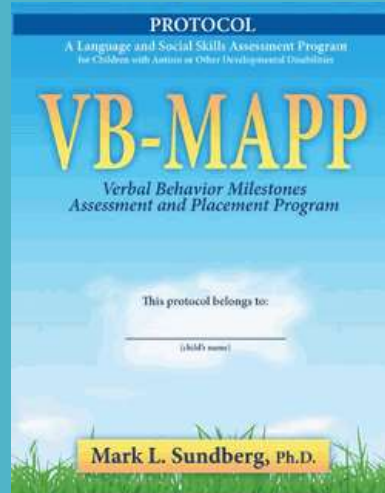
Fall of 2005



Dr. Kaye Otten joined
our team!



January, 2010





"A failure is not always a mistake, it may only be the best one can do under the circumstances. The real mistake is to stop trying."

-B. F. Skinner

What have I unleashed...?



“ IF YOU DON'T HAVE TIME TO DO IT RIGHT,
WHEN WILL YOU HAVE TIME TO DO IT OVER? ”
- JOHN WOODEN



Late Fall, 2012

The first step to getting anywhere is deciding
you're no longer willing to stay where you are.

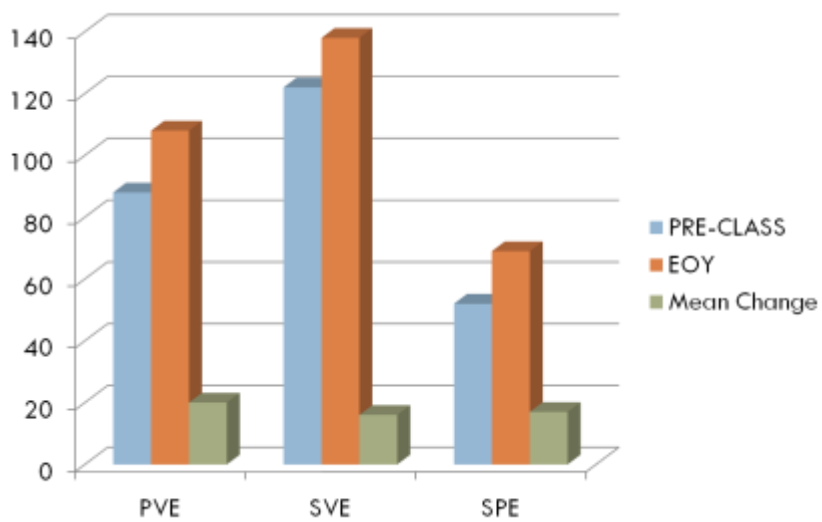




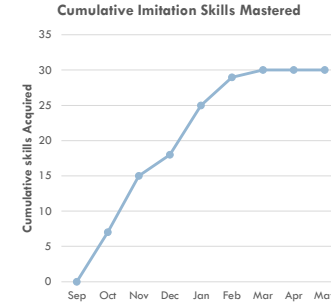
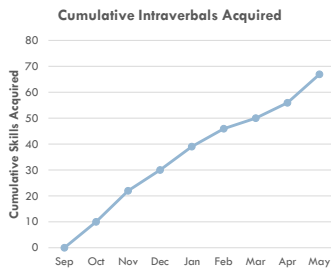
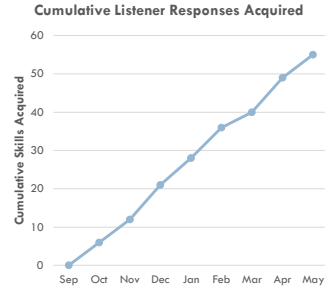
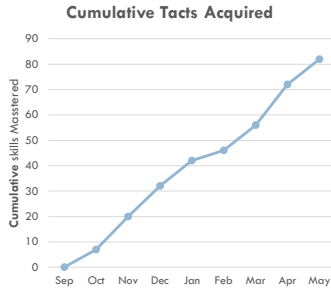
May
2013



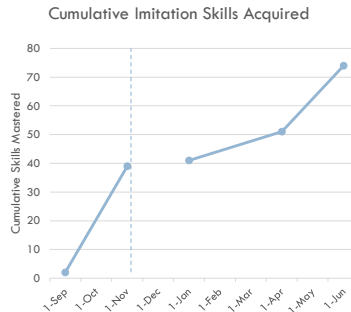
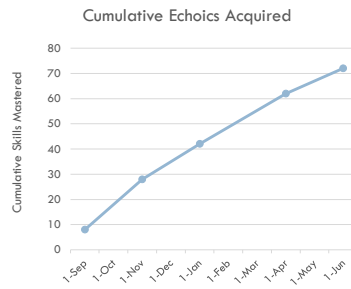
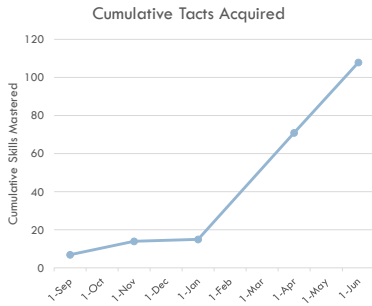
Student Outcomes
Changes in *MEAN* Milestones Scores in 1st Year



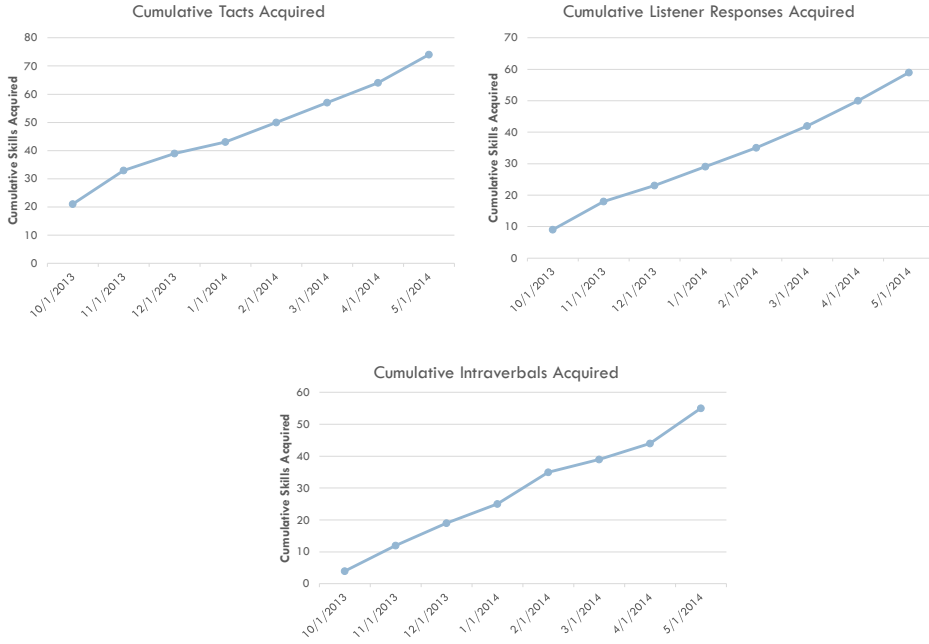
“Chad” Operant Data – Year 1



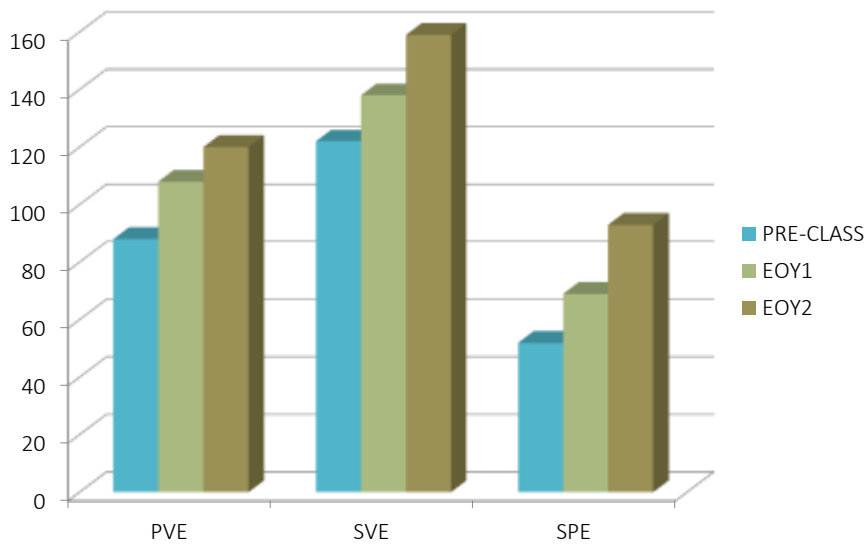
“Rebecca” Operant Data – Year 1



“Nate” Operant Data – Year 1



Student Outcomes Changes in *MEAN* Milestones Scores thru 2nd Year



Lacey – CLASS Teacher



Amy – CLASS Teacher



Bill & Julie – CLASS Parents



“I have seen my students make extraordinary gains in their language repertoires, empowering them to access their world in ways they never could before. As a teacher, I feel confident in the areas that I need to assess to determine each student’s skill sets which then guides me in developing a very systematic program appropriate for each of my unique learners.” - Lee’s Summit CLASS Teacher

“We have noticed that he has grown and changed when it comes to his speech and communication and interactions with others, both of which I think are directly attributable to the work that all of you do with him at school.” - LS Parent of a CLASS Student

“Evidence knows no boundary;
collaboration
for children across state lines”



A collage of images and text. At the top center is the logo for the Pennsylvania Department of Education, featuring a graduation cap and the text "pennsylvania DEPARTMENT OF EDUCATION". Below this is the text "Bureau of Special Education" and "Pennsylvania Training and Technical Assistance Network". The collage includes several photographs: a man in a suit on the left, a woman in a white shirt in the center, a man with a beard sitting at a table in the bottom left, and a woman with dark hair smiling in the bottom right. There are also some white rectangular redaction marks.

“Alone we can do
so little;
together we can
do so much.”

-Helen Keller